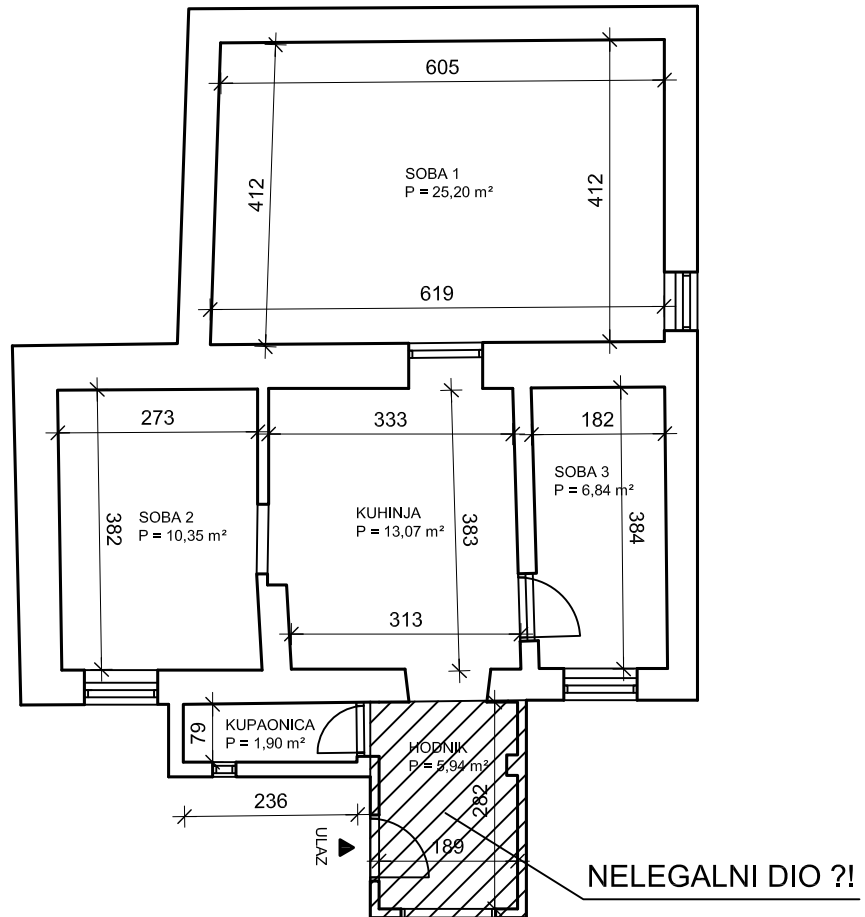


Silvije Bačića 19, Rijeka
zk.ul. ; k.č. ; k.o.

TLOCRT STANA



| PROSTORIJE: | | |
|---------------|--------|-------------------------------|
| 1. SOBA 1 | k=1,00 | P= 25,20 m ² |
| 2. SOBA 2 | k=1,00 | P= 10,35 m ² |
| 3. SOBA 3 | k=1,00 | P= 6,84 m ² |
| 4. KUHINJA | k=1,00 | P= 13,07 m ² |
| 5. HODNIK | k=1,00 | P= 5,94 m ² |
| 6. KUPAONICA | k=1,00 | P= 1,90 m ² |
| UKUPNO | | P= 63,30 m² |