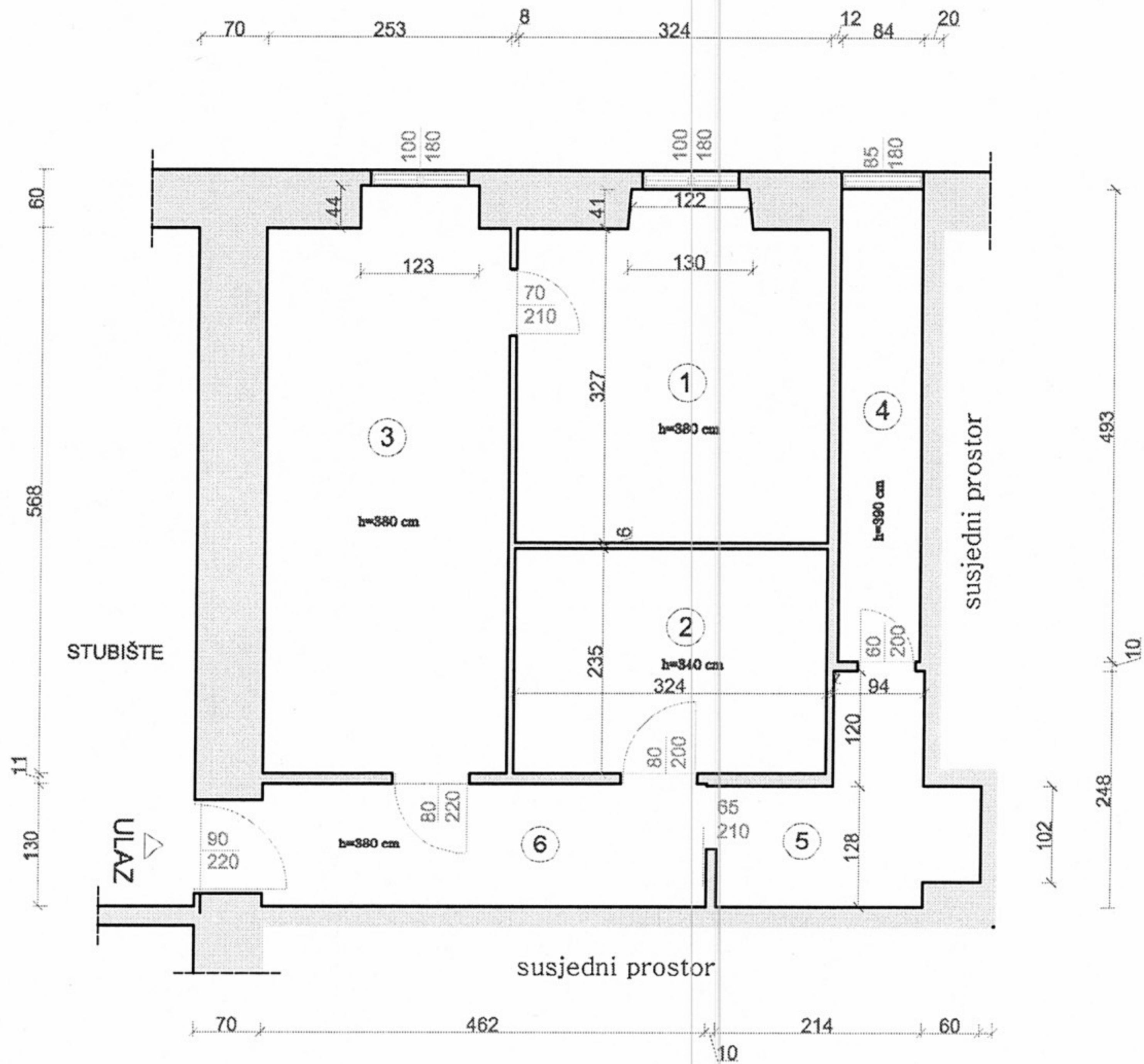


# Ive Marinkovića 7

stan br. 2

P = 48,90 m<sup>2</sup>

h = 3,4 - 3,90 m



1. SOBA I., P= 11,11 m<sup>2</sup>, parket
2. SOBA II., P= 7,61 m<sup>2</sup>, parket
3. KUHINJA, P= 14,91 m<sup>2</sup>, teraco
4. IZBA, P= 4,14 m<sup>2</sup>, teraco
5. KUPAONICA + WC,  
P= 4,48 m<sup>2</sup>, teraco
6. HODNIK, P= 6,65 m<sup>2</sup>, ker. pločice

listopad, 2018. g.