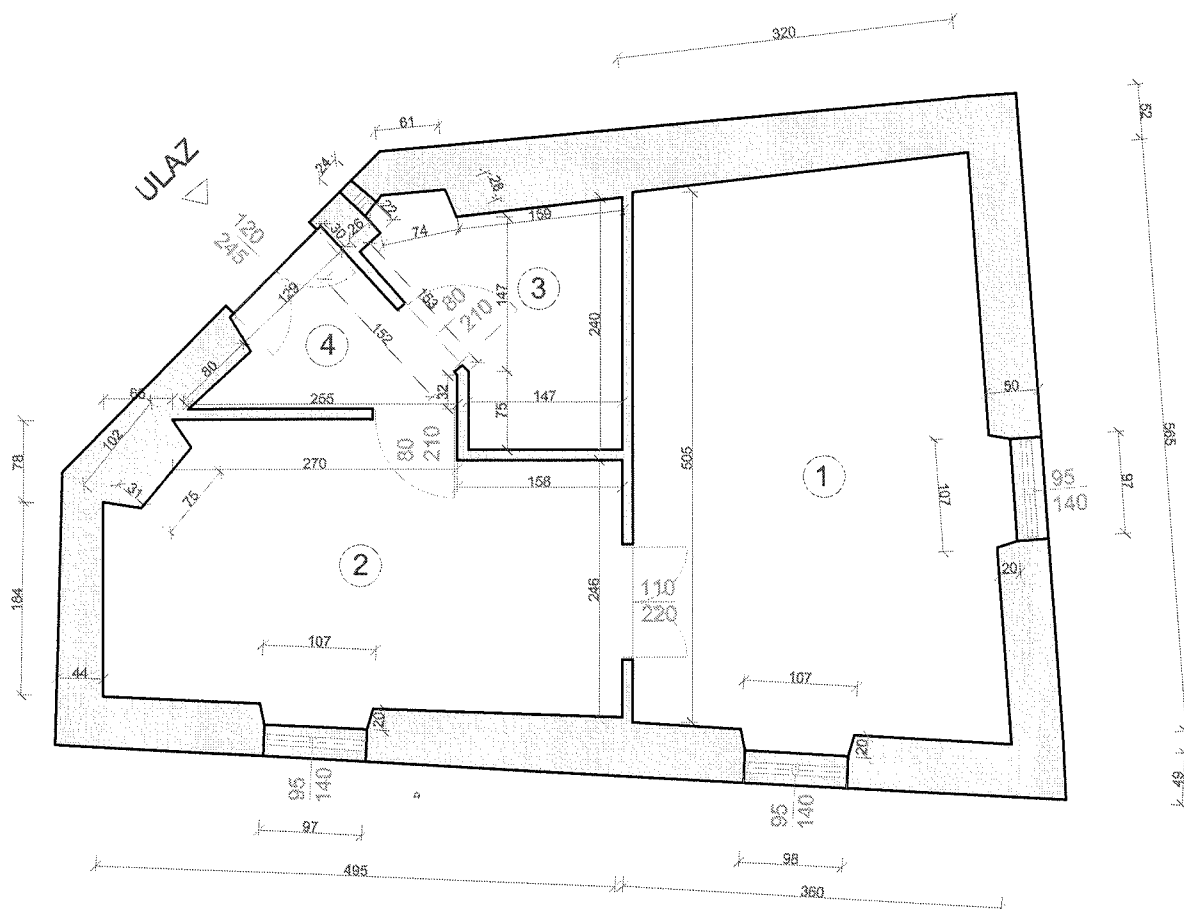


Stube Marka Remsa 4

stan br. 1

P = 37,96 m²

h = 2,70 m



1. SOBA, P= 18,60 m², dašćani pod
2. KUHINJA, P= 12,60 m², linoleum
3. KUPAONICA + WC,
P=4,29 m², ker. pločice
4. HODNIK, P= 2,47 m², linoleum

listopad, 2018. g.