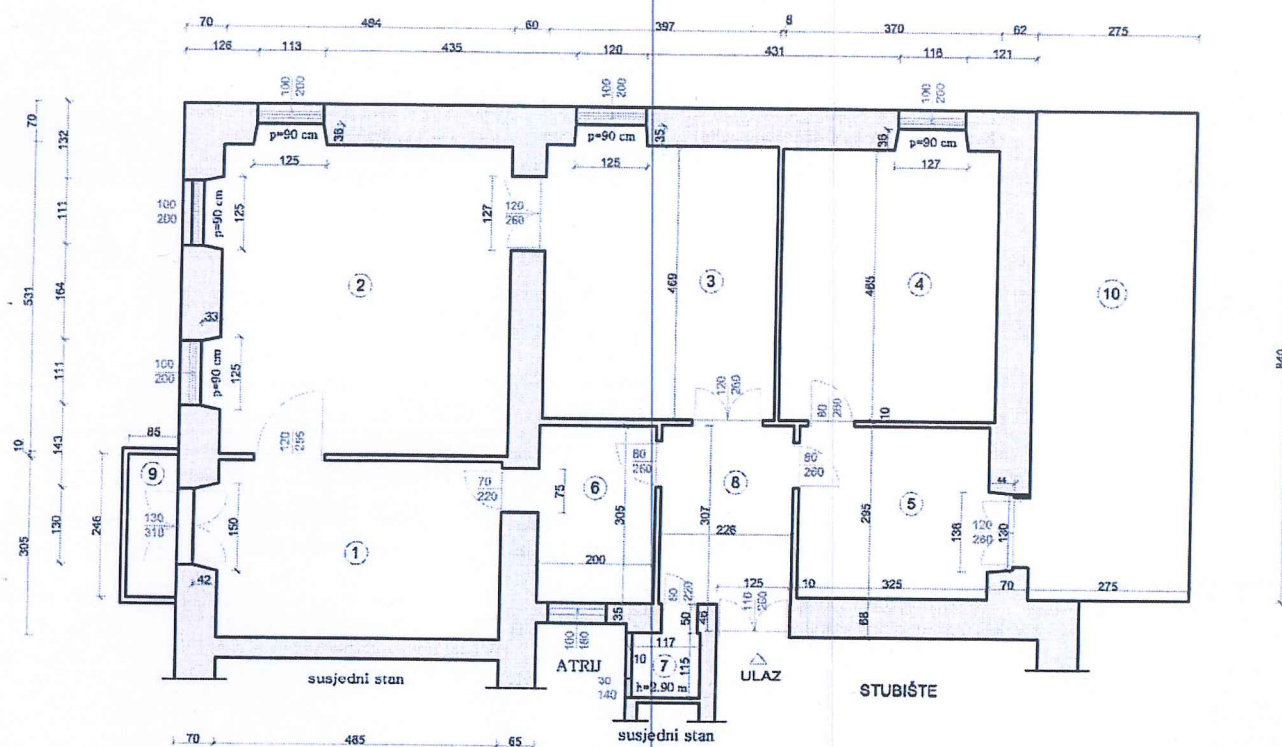


Franje Brentinija 4

stan br. 1
 P = 112,11 m²
 h = 3,57 m



1. SOBA I., P= 15,38 m², parket
2. SOBA II., P= 28,00 m², parket
3. SOBA III., P= 19,05 m², parket
4. SOBA IV., P= 17,65 m², laminat
5. KUHINJA, P= 10,18 m², PVC pločice
6. KUPAONICA, P= 6,47 m², teraco
7. NUŽNIK, P = 1,56 m², teraco
8. HODNIK, P= 7,52 m², teraco
9. BALKON, P= 0,52 m², cement. glazura
10. TERASA, P= 5,78 m², cement. glazura

prosinac, 2018. g.