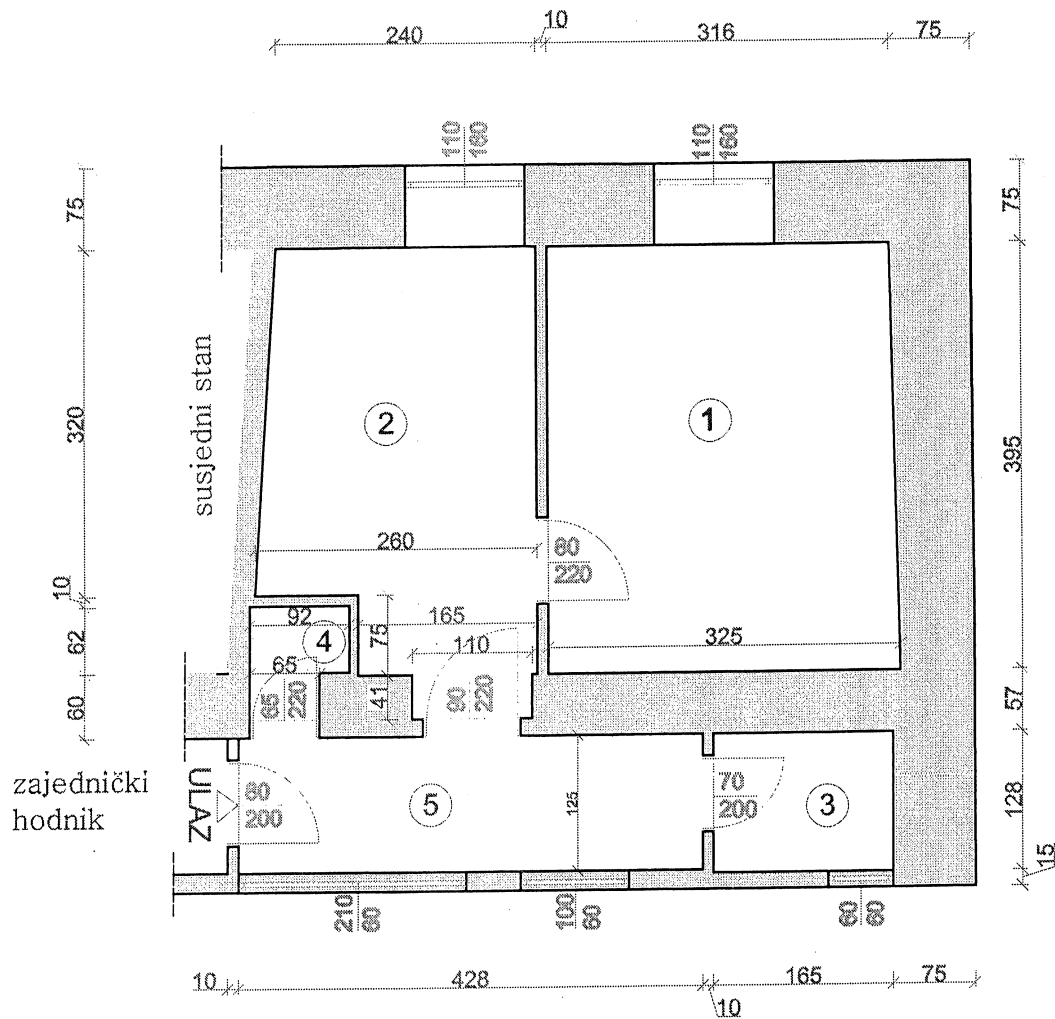


# Prvog maja 26 stan br. 9

$P = 30,65 \text{ m}^2$ ,  
 $h = 2,70 \text{ m}$



1. SOBA,  $P=12,64 \text{ m}^2$ , linoleum
2. KUHINJA,  $P=9,69 \text{ m}^2$ , linoleum
3. KUPAONICA,  
 $P=2,11 \text{ m}^2$ , keramičke pločice
4. NUŽNIK,  $P= 0,86 \text{ m}^2$ , keramičke pločice
5. HODNIK,  $P=5,35 \text{ m}^2$ , teraco

prosinac, 2020. g.